

Mould Comparator



The HSTEC Mould Comparator machine has following features:

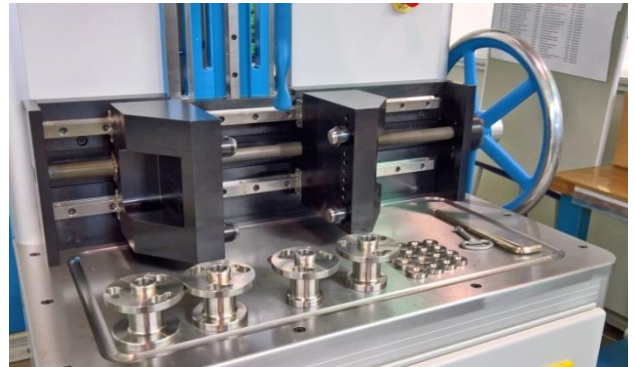
- Most Accurate and Fastest Machine in the glass container industry
- Rapid set up time
- Measurements in less than 1 minute
- Water Temperature Compensation
- Operator Friendly
- Simple Maintenance
- Comprehensive Training provided
- Comprehensive Support

Machine Specifications

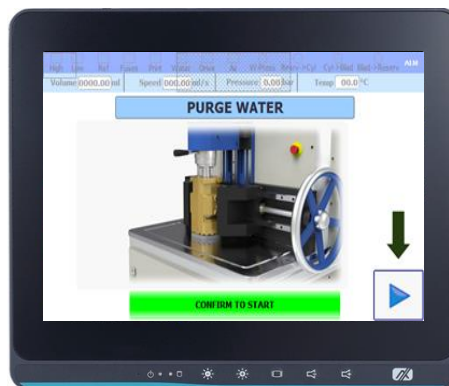
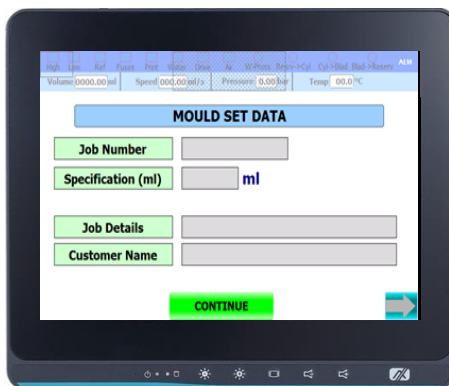
Electric Supply	230V 50Hz / 110V 60Hz
Air Supply	Minimum 60 psi
Cavity	Round or Shapes Mould or Blank Cavities Capacities up to 2000 ml
Bladders	14 different sizes available
Tools Supplied	All standard tools required to fully operate the machine. Starter Kit of Rubber Inflators (Size 1-5, 10 pcs. per Size)
Machine Sizes	(H x W x D) 188 x 93 x 83 cm
Mould Height	100 – 440 mm
Mould Diameter	Maximum 310 mm

The Rapid Clamping Device has following features:

- Integrated Torque Limiter for controlled consistent clamping force
- Clamping force applied to the center of the mould / blank
- Self-centering vice jaws with linear guides
- Clamping height adjustment
- No additional tooling required



Simple step by step user friendly large 10" PC touch panel:



Data output options:

- Ethernet / Wi-Fi Connection for Local Network Data Transfer
- USB Data Transfer
- PDF Report Creator
- Raw Data output in Excel format
- Email measurements directly from the machine

