

Mould Repair Workstation Hydraulic



Welcome to the future

Address

Zagrebačka 100,
23 000 Zadar, Croatia

Find us on

www.glass-systems.hr



Contact

+385 (0)23 770 595
info@glass-systems.hr

Designed for extra heavy, large, and bulky moulds

For small to medium sized mould equipment we recommend our Manual and Pneumatic Workstation

Multi axis mould manipulating fixture
Hydraulic lifting column
Hydraulic joint face clamping
Integrated hydraulic power unit
Quick change mould location inserts
Unobstructed mould face access
Safety two hand control operation
Mould waist diameter max. 180 mm

Welcome to the future

Address

Zagrebačka 100,
23 000 Zadar, Croatia

Find us on

www.glass-systems.hr

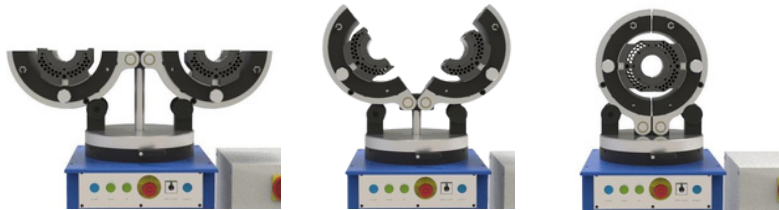


Contact

+385 (0)23 770 595
info@glass-systems.hr

Manipulation Movements

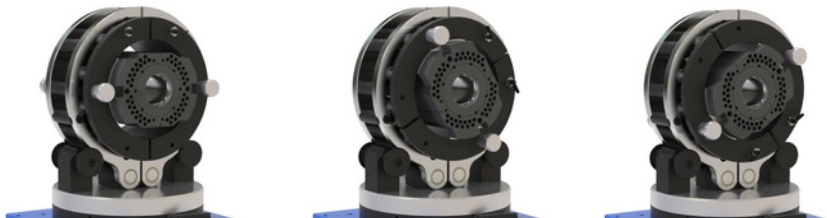
Mould Clamping



Unlimited fixture rotation



Unlimited Mould Rotation



400mm height adjustment



Welcome to the future

Address

Zagrebačka 100,
23 000 Zadar, Croatia

Find us on

www.glass-systems.hr



Contact

+385 (0)23 770 595
info@glass-systems.hr

Mould Repair Workstation Hydraulic

More info available:



www.glass-systems.hr

Welcome to the future

Address

Zagrebačka 100,
23 000 Zadar, Croatia

Find us on

www.glass-systems.hr



Contact

+385 (0)23 770 595
info@glass-systems.hr