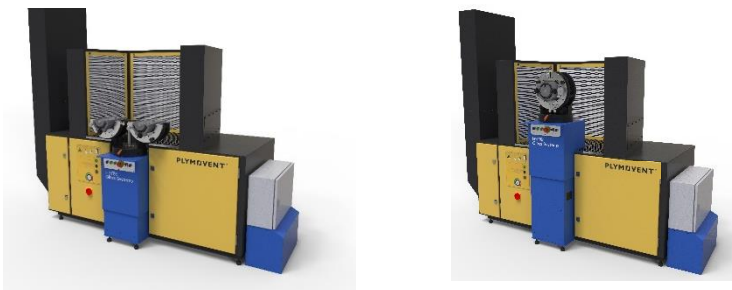


The Draftmax Ultra + Workstation

Designed in cooperation by Plymovent and HSTec Glass Systems
for the Glass Container Industry.

The combination of both systems provides a significant benefit for a healthier
working environment in the mould shop and the reduction of operator fatigue
in this physically demanding practice of mould repair.

Draftmax Ultra + Hydraulic Workstation



Draftmax Ultra + Pneumatic Workstation



Draftmax Ultra + Manual Workstation



It is important to keep workplace exposure below the legal limits, even in peak-times.
Your colleagues are the most valuable asset of your company, taking care of them by
providing clean air at work can make them healthier and happier.

Draftmax Ultra + Workstation

EXTRACTION TABLE

The extraction table is a workbench with an integrated extraction fan and filtration system.

The table features a 3-piece work grid, back and side extraction panels, a labyrinth spark trap for optimum spark arresting and two oval filter cartridges. In addition, the extraction table is fitted with a HEPA kit and a silencer/outlet duct that are mounted on the outlet.

The filter cartridges are self-cleaning by means of an automatically controlled compressed air system.

APPLICATIONS

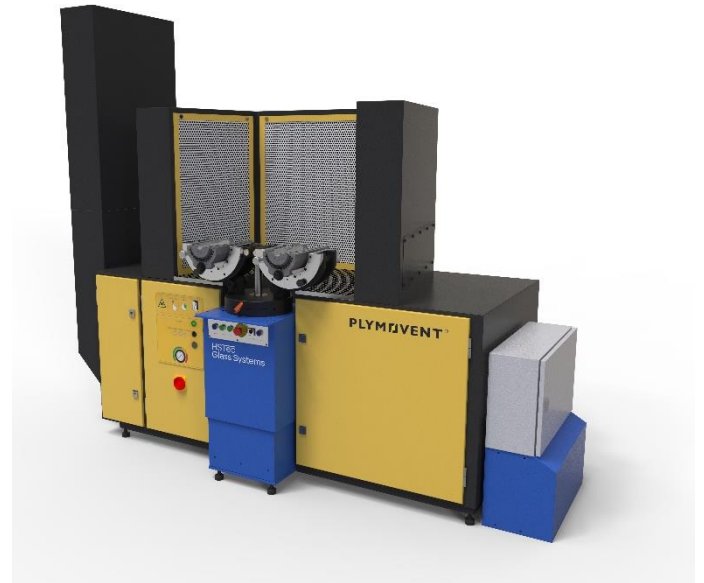
The DraftMax Ultra is intended to be used for the following applications:

- flame spraying
- polishing

The product has especially been designed to remove fumes and dust containing nickel, that are released during mould maintenance in the glass processing industry.

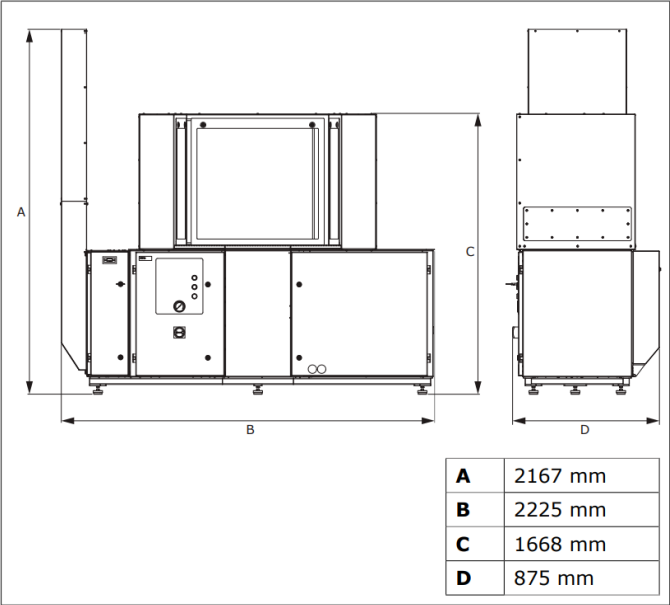
SPECIFICATIONS

Physical dimensions and properties	
Material:	epoxy-coated sheet metal galvanized steel, zinc-plated
Colour:	grey RAL 7011 yellow RAL 1004
Height adjustment	920-970 mm
Weight (net)	450 kg
Max. load	200 kg
Protection class	IP 55 (control box only)
Filters	
Filter package:	<ul style="list-style-type: none"> • labyrinth spark trap • spark arrester (2) • main filter • final filter
Filter surface area:	<ul style="list-style-type: none"> • 2 x 26 m² • 34 m²
Dust class (DuraFilter FCC-52)	M (according to DIN EN 60335-2-69)
Filter class (HEPA filter)	HEPA 11
Compressed air system	
Compressed air connection	G 3/8" (female)
Compressed air tank	9 litres
Compressed air pressure	5-8 bar
Required compressed air quality	dry and oil-free, according to ISO 8573-3 class 6



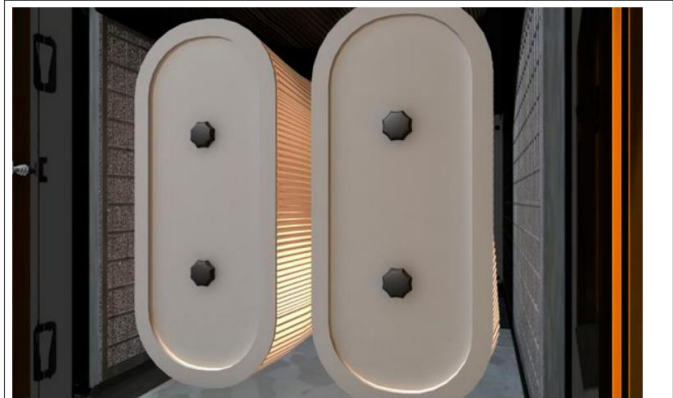
Online cleaning	7 times per filter during 2 minutes
Activation of filter cleaning system	pressure controlled
Performance	
Fan type	radial
Air volume	2500 m ³ /h
Sound level (according to ISO 3746)	67 dB(A)
Electrical data	
Connection voltage	380-480V/50-60Hz
Power consumption	max. 3 kW
Motor design	IEC B3
Supply cable	3 m (1 m internal, 2 m external)
Plug	not included
Ambient conditions	
Process temperature:	<ul style="list-style-type: none"> • min. 5°C • nom. 20°C • Max. 40°C
Max. relative humidity	80%
Suitable for outdoor use	no
Storage conditions	<ul style="list-style-type: none"> • 5-40°C • relative humidity max. 80%
Scope of supply	
Extraction table; incl. HEPA kit and lower shaft of the silencer/outlet duct Upper shaft with top grid Square key 8 mm Square key 6mm	
Order information	
Article no.	0000303059
Number/package	1
Logistics data	
Gross weight (incl. pallet)	480 kg
Packing dimensions (incl. pallet)	2300 x 930 x 1900 mm
Max. number/pallet	1
Harmonized Tariff Code	8421.39.2090

DIMENSIONS

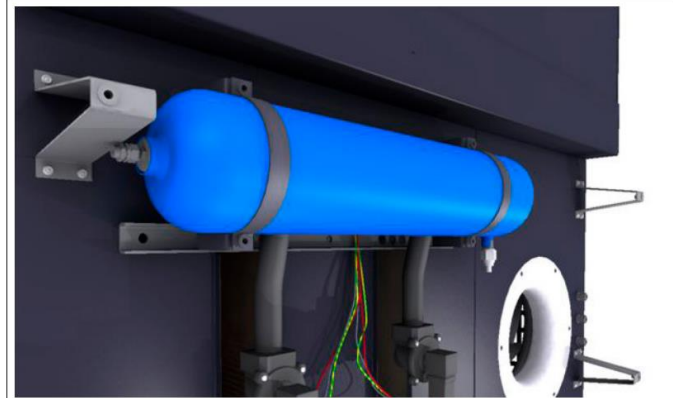


FEATURES & BENEFITS

- Very effective 5-stage filtration package
- All maintenance performed from the front and sides



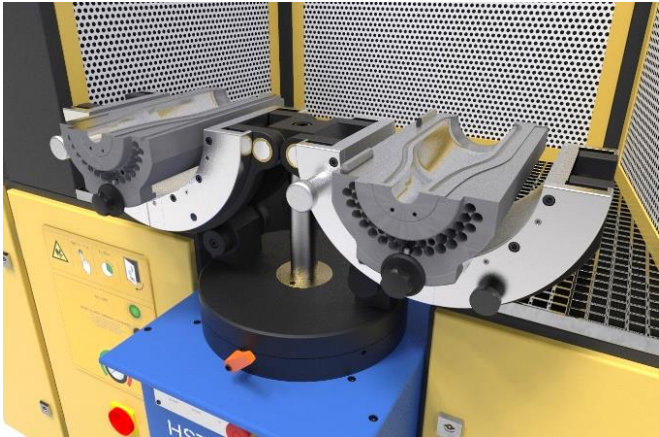
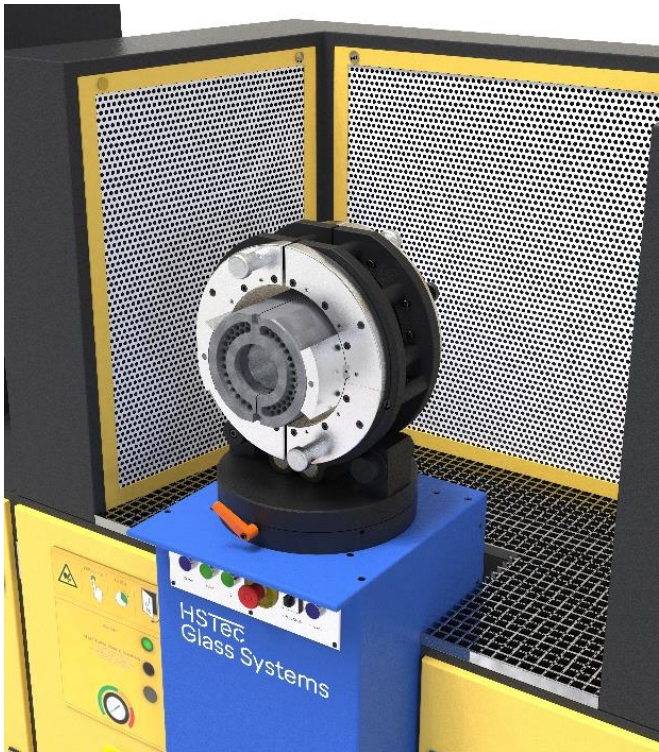
Maximum filter surface area



Efficient filter cleaning

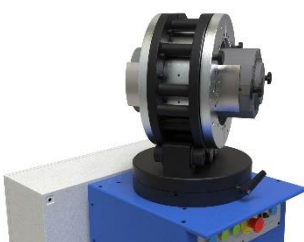
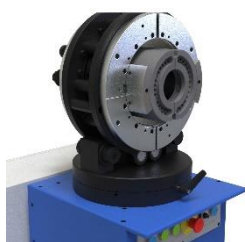
APPROVALS/CERTIFICATES

CE
Compliance with EN-ISO 21904-2-2020 (W3)



SPECIFICATIONS - Hydraulic Version

Physical dimensions and properties	
Material:	epoxy-coated sheet metal
• Housing	
Colour:	blue RAL 5015
• housing	
Weight (net)	450 kg
Max. load	80 kg
Electrical Data	
Operating Voltage:	230V
Frequency:	50Hz
Total Power Supply:	1 Kw
Max Fuse Protection:	10A
Nominal Current:	3A
Features	
Height adjustment	1040-1390 mm
Table Rotation	360 degree
Mould Rotation	360 degree
Two halves loading for face work	yes
Two button lifting operation	yes
Two button open/close fixture operation	yes
Customer dedicated mould insert pads	yes



Bench Integrated or freestanding Workstation.

Plymovent Group BV
Koraalstraat 9, Alkmaar, 1812 RK,
Netherlands
Tel +31 (0)72 7504 600
Mail. info@plymovent.com

HSTec - Glass S Ltd.
Zagrebačka 100,
23 000 Zadar, Croatia
tel. +385 (0)23 770 595
mail. info@glass-systems.hr

SPECIFICATIONS - Pneumatic Version

Physical dimensions and properties	
Material:	
• Housing	epoxy-coated sheet metal
Colour:	
• housing	blue RAL 5015
Weight (net)	200 kg
Max. load	30 kg
Electrical Data	
Operating Voltage:	230V
Frequency:	50Hz
Total Power Supply:	0.5 Kw
Max Fuse Protection:	6A
Nominal Current:	2.1A
Features	
Height adjustment	890-1290 mm
Table Rotation	360 degree
Mould Rotation (with clamp rings)	360 degree
Two halves loading for face work	no
Two button lifting operation	yes
Foot Pedal clamping	yes
Customer dedicated mould clamp rings	yes



Bench Integrated or freestanding Workstation.

Plymovent Group BV
Koraalstraat 9, Alkmaar, 1812 RK,
Netherlands
Tel +31 (0)72 7504 600
Mail. info@plymovent.com

HSTec - Glass S Ltd.
Zagrebačka 100,
23 000 Zadar, Croatia
tel. +385 (0)23 770 595
mail. info@glass-systems.hr

SPECIFICATIONS - Manual Version

Physical dimensions and properties	
Material:	
• Housing	epoxy-coated sheet metal
Colour:	
• housing	blue RAL 5015
Weight (net)	200 kg
Max. load	30 kg
Electrical Data	
Operating Voltage:	230V
Frequency:	50Hz
Total Power Supply:	0.5 Kw
Max Fuse Protection:	6A
Nominal Current:	2.1A
Features	
Height adjustment	890-1290 mm
Table Rotation	360 degree
Mould Rotation (with clamp rings)	360 degree
Two halves loading for face work	no
Two button lifting operation	yes
Foot Pedal clamping	No
Customer dedicated mould clamp rings	yes



Bench Integrated or freestanding Workstation.

Plymovent Group BV
Koraalstraat 9, Alkmaar, 1812 RK,
Netherlands
Tel +31 (0)72 7504 600
Mail. info@plymovent.com

HSTec - Glass S Ltd.
Zagrebačka 100,
23 000 Zadar, Croatia
tel. +385 (0)23 770 595
mail. info@glass-systems.hr