

Features

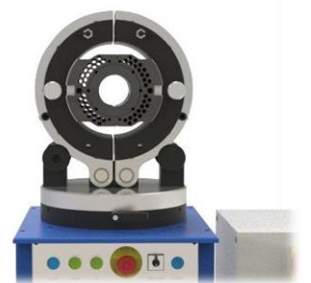
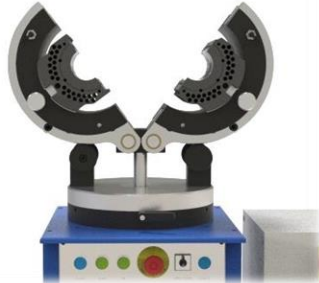
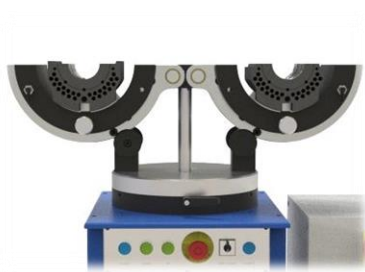
Mould Repair Workstation has following features:

- Multi axis mould manipulating fixture
- Unlimited fixture rotation
- Unlimited mould rotation
- Hydraulic lifting column
- Hydraulic joint face clamping
- 400 mm vertical height adjustment
- Integrated hydraulic power unit
- Quick change mould location inserts
- Unobstructed mould face access
- Safety two hand control operation
- 80 kg load capacity
- Mould waist diameter max. 216 mm

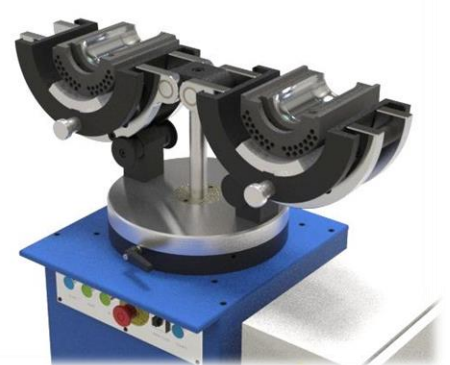
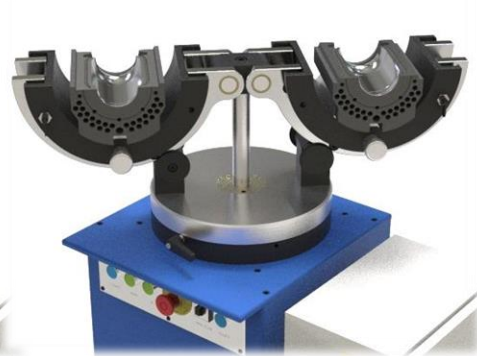


Mould Repair Workstation - Hydraulic

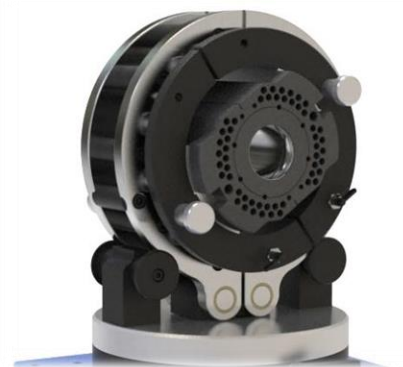
Manipulation Movements



Mould Clamping



Unlimited fixture rotation



Unlimited mould rotation



400mm height adjustment

HSTEC - GLASS SYSTEMS Ltd.
Zagrebačka 100, 23 000 Zadar, Croatia

tel. +385 (0)23 205 430

fax. +385 (0)23 205 406

mail. info@glass-systems.hr