

Mould Repair Workstation Manual



Welcome to the future

Address

Zagrebačka 100,
23 000 Zadar, Croatia

Find us on

www.glass-systems.hr



Contact

+385 (0)23 770 595
info@glass-systems.hr

Lifting capacity of 100 kg

Designed for small to medium sized mould equipment

For very heavy large moulds we recommend our Hydraulic Workstation

Manual vice opening/closing
Multi axis mould manipulating fixture
Unlimited fixture rotation
Electric driven lifting column
400 mm height adjustment
Serrated vice jaws
Unobstructed mould face access

Welcome to the future

Address

Zagrebačka 100,
23 000 Zadar, Croatia

Find us on

www.glass-systems.hr

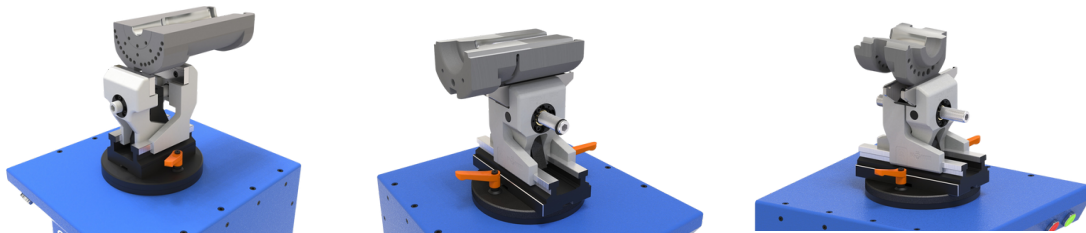


Contact

+385 (0)23 770 595
info@glass-systems.hr

Clamping Variations

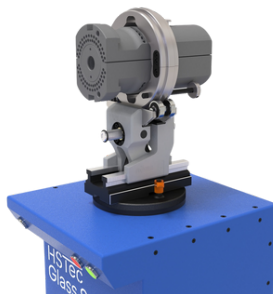
Mould half clamping on hanger/lug



Complete mould clamping using
chain clamp



Complete mould clamping using
HSTec Glass Systems Clamping
Rings for a smoother rotation



Welcome to the future

Address

Zagrebačka 100,
23 000 Zadar, Croatia

Find us on

www.glass-systems.hr



Contact

+385 (0)23 770 595
info@glass-systems.hr

Mould Repair Workstation Manual

More info available:



www.glass-systems.hr

Welcome to the future

Address

Zagrebačka 100,
23 000 Zadar, Croatia

Find us on

www.glass-systems.hr



Contact

+385 (0)23 770 595
info@glass-systems.hr